

AMERICAN NURSE

OFFICIAL JOURNAL  American Nurses Association

January 2025 • Volume 20 • Number 1
MyAmericanNurse.com

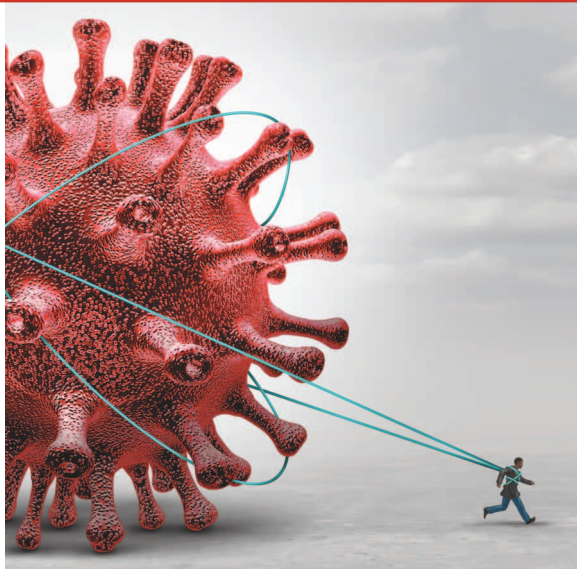
EDITORIAL

4 Editorial

By Lilee Gelinas, Editor-in-Chief

New Years resolutions: Keep them simple, measurable, and doable.

FEATURES



6 **CNE** Navigating Long COVID

By Erik P. Southard

As our knowledge about this condition continues to evolve, nurses must stay current with the latest evidence.

14 Food insecurity in early childhood

By Rubab Qureshi, Cheryl Holly, Mercedes Echevarria, Ganga Mahat, and Sallie Porter

Take an evidence-based approach to assessment and mitigation of this critical health issue.

STRICTLY CLINICAL



22 Hypersensitivity infusion reaction management

By Lisa Chichelo and Kathy Colopoulos

Consider this protocol to manage potentially life-threatening reactions.

RAPID RESPONSE

52 Acute dystonic reaction

By Jamie Bourgeois

A perceptive nurse's assessment ensures prompt treatment.

LEADING THE WAY

FROM YOUR ANA PRESIDENT

20 Elect to engage

By Jennifer Mensik Kennedy

Let's continue to fight for priorities critical to the nursing profession and the patients in our care.



PRACTICE MATTERS

ETHICS INBOX

26 Improving obstetric care for Black patients

By Tracy Wilson

Nurses must act to address harm.



51 Advancing antiracism

By Sandy Cayo

State nurses associations take the lead in their communities.



American Nurse Journal (ISSN 2689-9272 [print], ISSN 2769-7584 [online]) is published monthly by HealthCom Media, Lantern Hill Business Park, 259 Veterans Lane, Suite 201, Doylestown, PA 18901. Printed in the U.S.A. Copyright © 2025 by HealthCom Media. All rights reserved. No part of this publication may be reproduced, stored, or transmitted in any form or by any means, electronic or mechanical, including photocopy, recording, or any information storage and retrieval system, with-

out permission in writing from the copyright holder. Periodicals Postage paid at Doylestown, PA and additional offices.

Postmaster: Send address changes to *American Nurse Journal*, Lantern Hill Business Park, 259 Veterans Lane, Suite 201, Doylestown, PA 18901.



Subscription information: Annual subscriptions: \$49.00 U.S.; \$59.00 Canada; \$71.00 outside U.S./Canada. Single copies: \$7 U.S.; \$15 outside U.S. Institutional subscriptions available by request. Digital-only subscription: \$14.97.

Reprints and back issues: Contact Chris Evans Gartley (Production Director) at 215-489-7000 or production@healthcommedia.com. Availability may be limited.

53 How to balance a bed shortage
By Natalie Evenson, Andrew Denton, Kathleen Therien, and Julie Mandart
 Learn about an innovative approach to a challenging issue.

VIEWPOINT

56 Putting health policy into perspective
By Kim Kuebler
 Health policy has a direct impact on nursing practice.

WEB EXCLUSIVE!

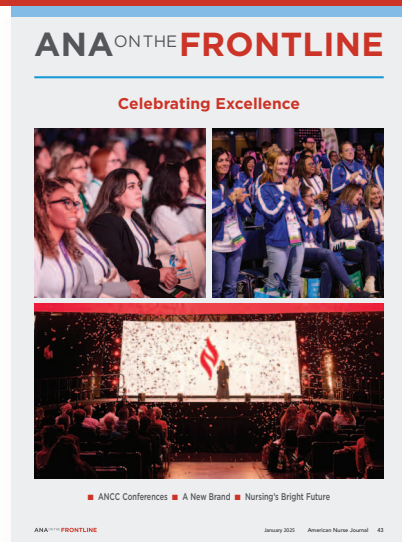
News & Notes

Access a round-up of clinical and practice news and alerts at myamericannurse.com/category/news

SPECIAL SECTION: NURSING EXCELLENCE



ANA ON THE FRONTLINE



43 Learn about the top issues facing ANA member nurses, how ANA is working for you, and what ANA is doing to advance nursing.

FEATURE ARTICLE:

ANCC National Magnet® and Pathway to Excellence® Conferences

28 Robust shared governance for clinical nurses
By Lauren M. Murphy, Lindsey Ford, and Megan Lamoreux
 This organization's framework advances nursing professionalism.

33 Smart pump technology and dose error reduction
By Sunny Carrington-Hahn, Tracy Gosselin, Evan Frasure III, and Staci S. Reynolds
 This QI project aimed to improve nurse adherence.

37 Post-pandemic quality of life
By Brooke Whittaker and Sarah Hummer
 Retention requires an understanding of nurses' current experiences.

COMING NEXT MONTH

- CNE: Tanner's clinical judgment model
- AI and documentation burden reduction
- SPECIAL SECTION: Nursing trends and salary survey

Subscription Questions?
 Christian Evans Gartley, Production Director
 215.489.7004
cevangartley@healthcommedia.com

Change in Mailing Information?
 To change your subscription information online, send request to Christian Evans Gartley, Production Director, at cevangartley@healthcommedia.com

Indexing
American Nurse Journal is indexed in the Cumulative Index to Nursing and Allied Health Literature.

Submit an Article
 Please email Cheryl Mee, MSN, MBA, RN, FAAN, at cmee@healthcommedia.com. In the email, describe the topic of your proposed article and why it would be of interest to the readers of *American Nurse Journal*; include your name, credentials, employer, and phone number. We'll let you know if we're inter-

ested in the article you've proposed and can advise you on how to focus it. For more information, please refer to the Author Guidelines (MyAmericanNurse.com/author-guidelines).

Send a Letter to the Editor
 Your input is vital in ensuring that *American Nurse Journal* is a valuable resource to your practice. You can email a Letter to the Editor at MyAmericanNurse.com/send-letter-editor.